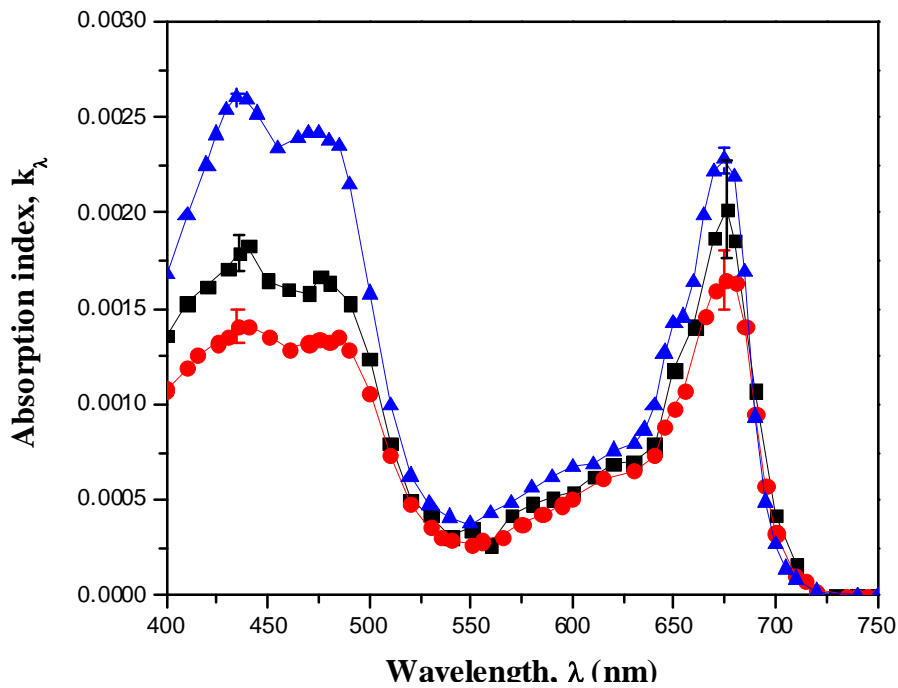
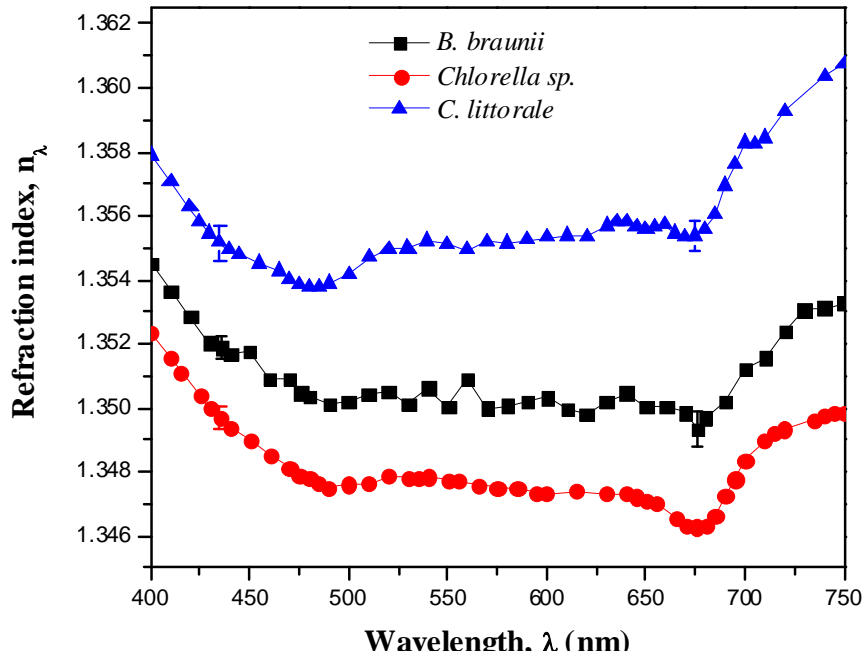
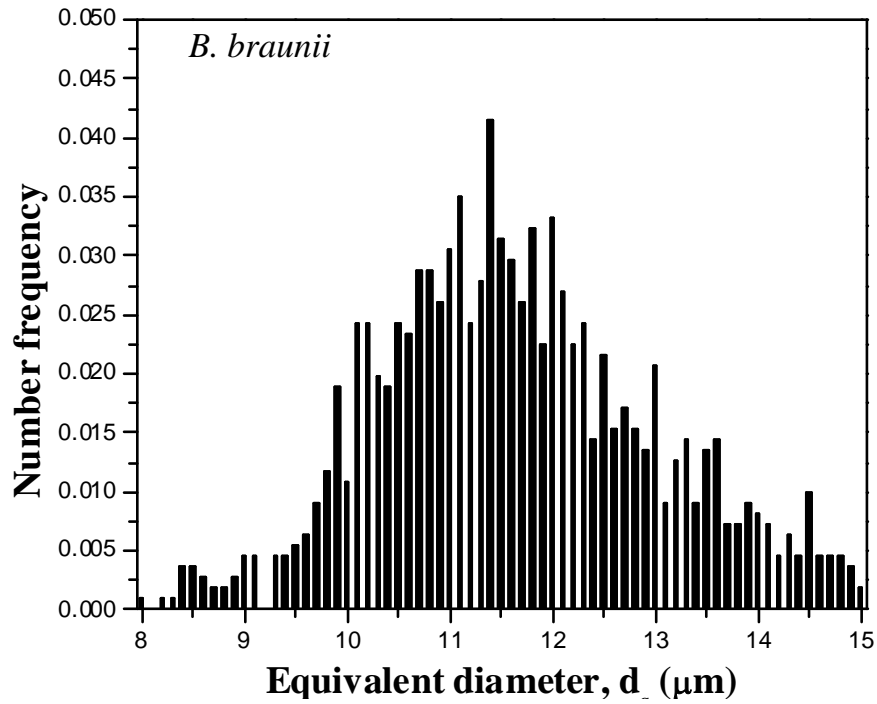


Refraction and absorption index of *Botryococcus braunii*, *Chlorella sp.* and *Chlorococcum littorale*

Source: Euntaek Lee, Ri-Liang Heng, Laurent Pilon, "Spectral optical properties of selected photosynthetic microalgae producing biofuels", Journal of Quantitative Spectroscopy and Radiative Transfer, Vol.114, pp.122-135. <http://dx.doi.org/10.1016/j.jqsrt.2012.08.012>

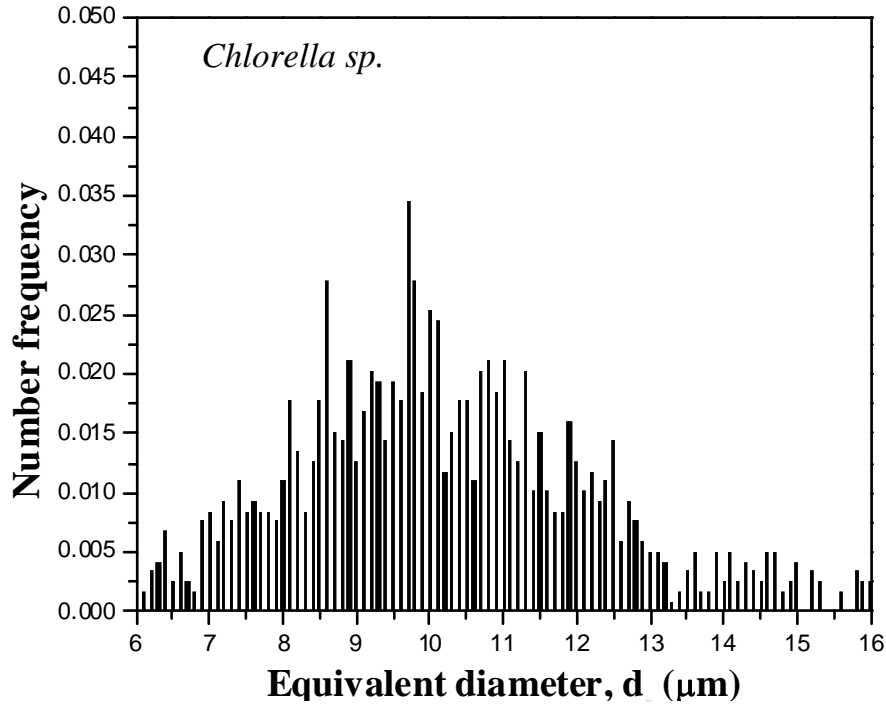


Refraction and absorption index of *Botryococcus braunii*



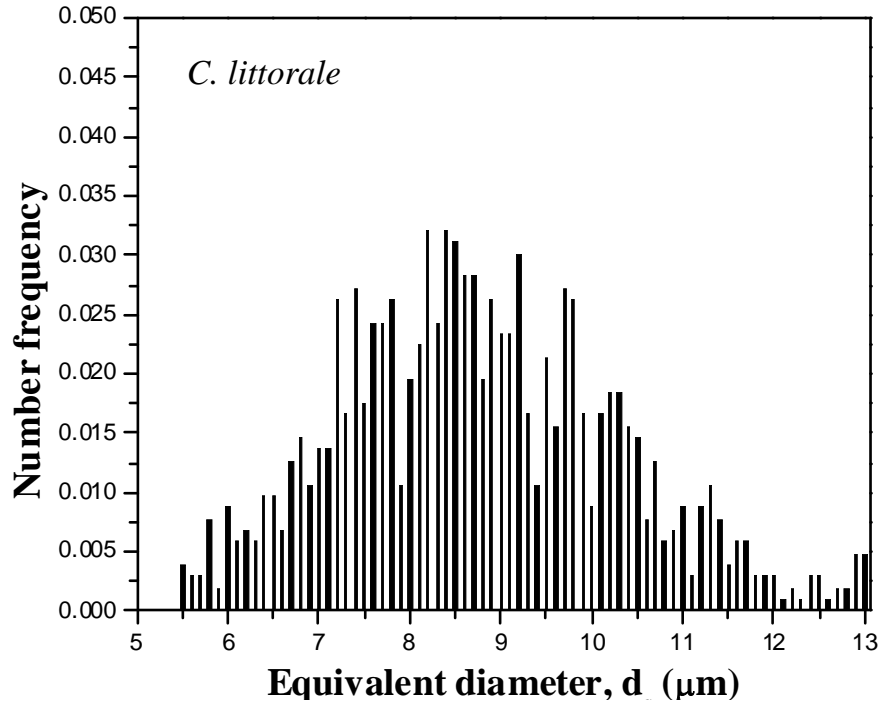
λ (nm)	Refraction index, n_λ	Absorption index, k_λ	λ (nm)	Refraction index, n_λ	Absorption index, k_λ
400	1.35451	0.00136	580	1.35008	0.00048
410	1.35365	0.00153	590	1.35019	0.00051
420	1.35286	0.00162	600	1.35032	0.00054
430	1.35203	0.00171	610	1.34996	0.00062
436	1.35187	0.00179	620	1.34981	0.00069
440	1.35167	0.00183	630	1.35018	0.00070
450	1.35177	0.00165	640	1.35046	0.00079
460	1.35091	0.00160	650	1.35004	0.00118
470	1.35091	0.00158	660	1.35004	0.00141
476	1.35046	0.00167	670	1.34985	0.00187
480	1.35034	0.00164	676	1.34934	0.00202
490	1.35011	0.00153	680	1.34967	0.00186
500	1.35021	0.00124	690	1.35019	0.00107
510	1.35045	0.00080	700	1.35122	0.00042
520	1.35051	0.00050	710	1.35156	0.00016
530	1.35010	0.00042	720	1.35241	0.00000
540	1.35061	0.00031	730	1.35307	0.00000
550	1.35005	0.00035	740	1.35312	0.00000
560	1.35091	0.00027	750	1.35329	0.00000
570	1.34999	0.00042			

Refraction and absorption index of *Chlorella sp.*



λ (nm)	Refraction index, n_λ	Absorption index, k_λ	λ (nm)	Refraction index, n_λ	Absorption index, k_λ
400	1.35235	0.00108	585	1.34747	0.00043
410	1.35157	0.00119	595	1.34735	0.00047
415	1.35113	0.00126	600	1.34731	0.00051
425	1.35041	0.00132	615	1.34742	0.00061
430	1.35000	0.00136	630	1.34734	0.00065
435	1.34970	0.00141	640	1.34734	0.00074
440	1.34939	0.00141	645	1.34722	0.00089
450	1.34900	0.00136	650	1.34710	0.00098
460	1.34854	0.00129	655	1.34704	0.00107
470	1.34815	0.00132	665	1.34658	0.00146
475	1.34792	0.00134	670	1.34631	0.00160
480	1.34783	0.00133	675	1.34627	0.00165
485	1.34763	0.00136	680	1.34632	0.00164
490	1.34750	0.00129	685	1.34660	0.00141
500	1.34761	0.00106	690	1.34723	0.00096
510	1.34765	0.00073	695	1.34777	0.00057
520	1.34787	0.00048	700	1.34837	0.00033
530	1.34784	0.00036	710	1.34897	0.00011
535	1.34780	0.00031	715	1.34919	0.00008
540	1.34785	0.00029	720	1.34934	0.00003
550	1.34775	0.00027	735	1.34962	0.00000
555	1.34770	0.00029	740	1.34977	0.00000
565	1.34760	0.00031	745	1.34984	0.00000
575	1.34752	0.00038	750	1.34984	0.00000

Refraction and absorption index of *Chlorococcum littorale*



λ (nm)	Refraction index, n_λ	Absorption index, k_λ	λ (nm)	Refraction index, n_λ	Absorption index, k_λ
400	1.35789	0.00168	590	1.35525	0.00062
410	1.35705	0.00199	600	1.35532	0.00068
420	1.35626	0.00225	610	1.35538	0.00069
425	1.35581	0.00241	620	1.35535	0.00076
430	1.35546	0.00254	630	1.35569	0.00079
435	1.35517	0.00261	635	1.35579	0.00087
440	1.35494	0.00259	640	1.35579	0.00100
445	1.35480	0.00252	645	1.35568	0.00127
455	1.35453	0.00234	650	1.35560	0.00142
465	1.35427	0.00239	655	1.35567	0.00146
470	1.35404	0.00242	660	1.35572	0.00164
475	1.35385	0.00242	665	1.35546	0.00199
480	1.35379	0.00238	670	1.35533	0.00222
485	1.35378	0.00235	675	1.35537	0.00228
490	1.35389	0.00215	680	1.35558	0.00219
500	1.35418	0.00158	685	1.35603	0.00169
510	1.35469	0.00100	690	1.35695	0.00094
520	1.35497	0.00063	695	1.35761	0.00049
530	1.35498	0.00048	700	1.35828	0.00027
540	1.35523	0.00041	705	1.35826	0.00014
550	1.35512	0.00037	710	1.35845	0.00009
560	1.35493	0.00043	720	1.35927	0.00002
570	1.35521	0.00048	740	1.36038	0.00000
580	1.35516	0.00056	750	1.36076	0.00000